

Elder Scrolls Online



Toymaker's Trove Mud Crab Plushie

*This pattern is intended for personal and non-commercial use unless otherwise stated.
Please use caution when handling sewing needles, scissors, and other sharp tools.*

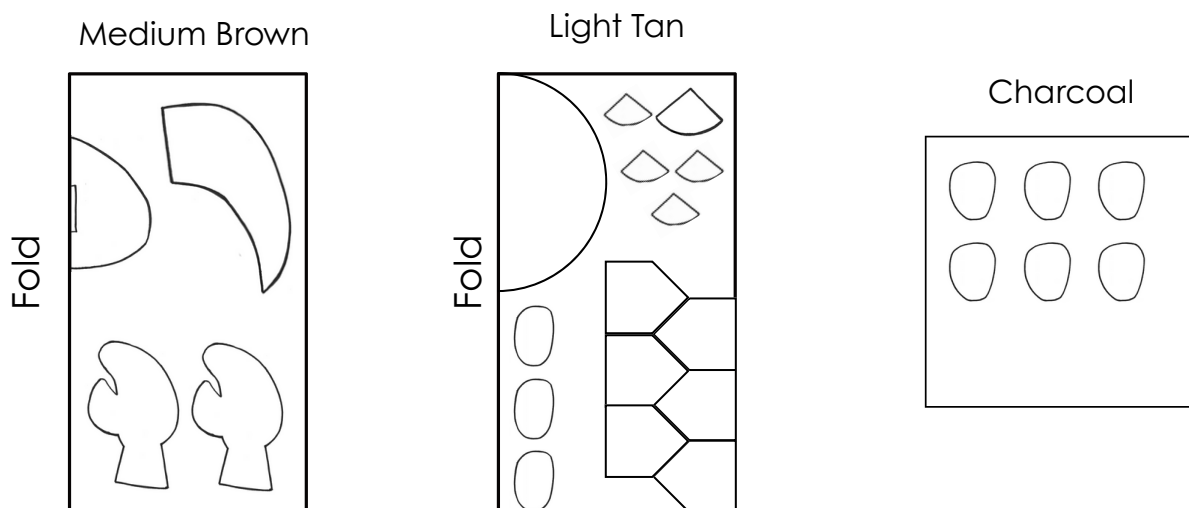
Supplies

- Half a Yard (.5 yards or .45 meters) of Light Tan Cotton
- Half a Yard (.5 yards or .45 meters) Medium Brown Cotton
- One (1) Dark Charcoal Cotton Fat Quarter (18 x 21 inches/46 x 54 cm)
- 8-10 oz of Doll Stuffing (depending on how firm you would like your plushie)
- Tan or Brown Sewing Thread
- Hand Sewing Needle
- (Optional) Plushie Eyes (Buttons, Plush Eyes, Embroidery Thread)

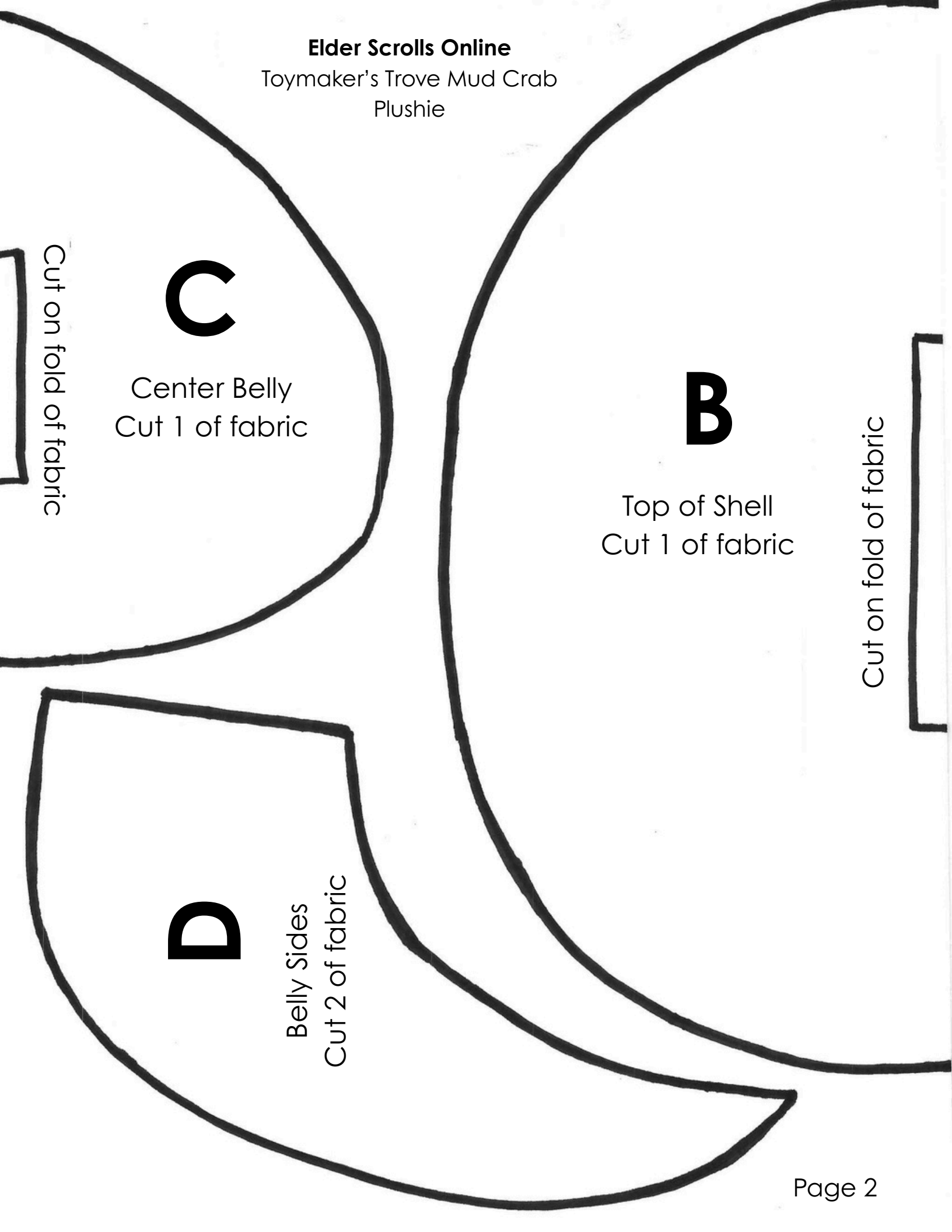
Pattern Information

- Please read all instructions prior to sewing the pattern.
- **Seam allowances are included in the pattern pieces.**
- Unless otherwise stated, all seam allowances will be 1/4th of an inch (.25 inches/6mm)
- When basting, the seam allowance will be 1/8th of an inch (.125 inches/3mm).
- Fabric colors can be swapped out for any desired colors or patterns.
- If this pattern is sewn using a machine, there will be some hand stitching for specific pieces of the pattern. This pattern can also be sewn completely by hand if desired.

Suggested Cutting Layouts



Elder Scrolls Online
Toymaker's Trove Mud Crab
Plushie



B

Top of Shell
Cut 1 of fabric

Cut on fold of fabric

C

Center Belly
Cut 1 of fabric

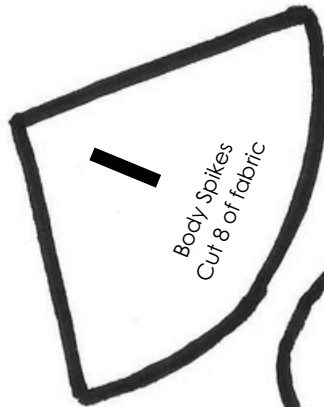
Cut on fold of fabric

D

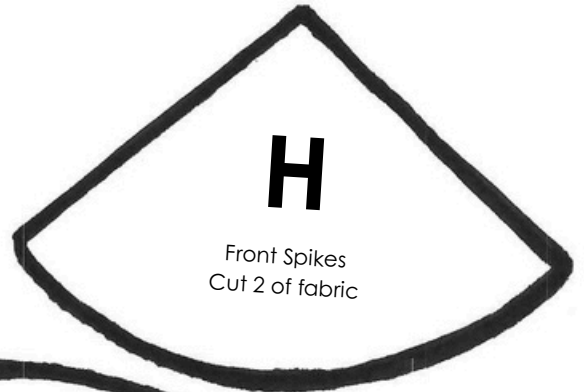
Belly Sides
Cut 2 of fabric



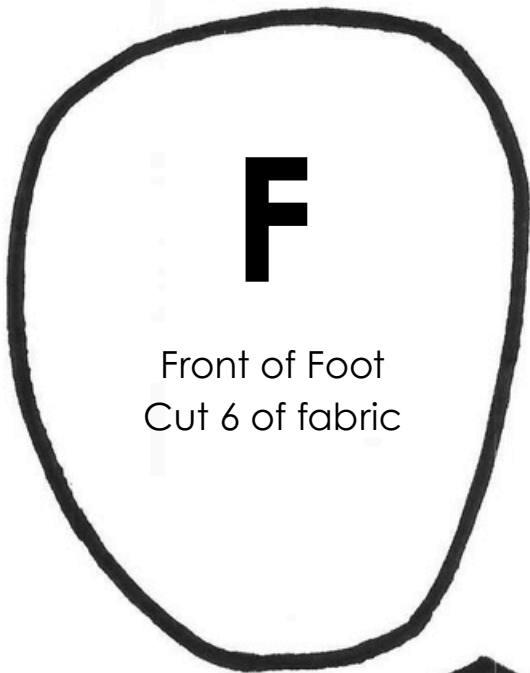
G
Back of Foot
Cut 6 of fabric



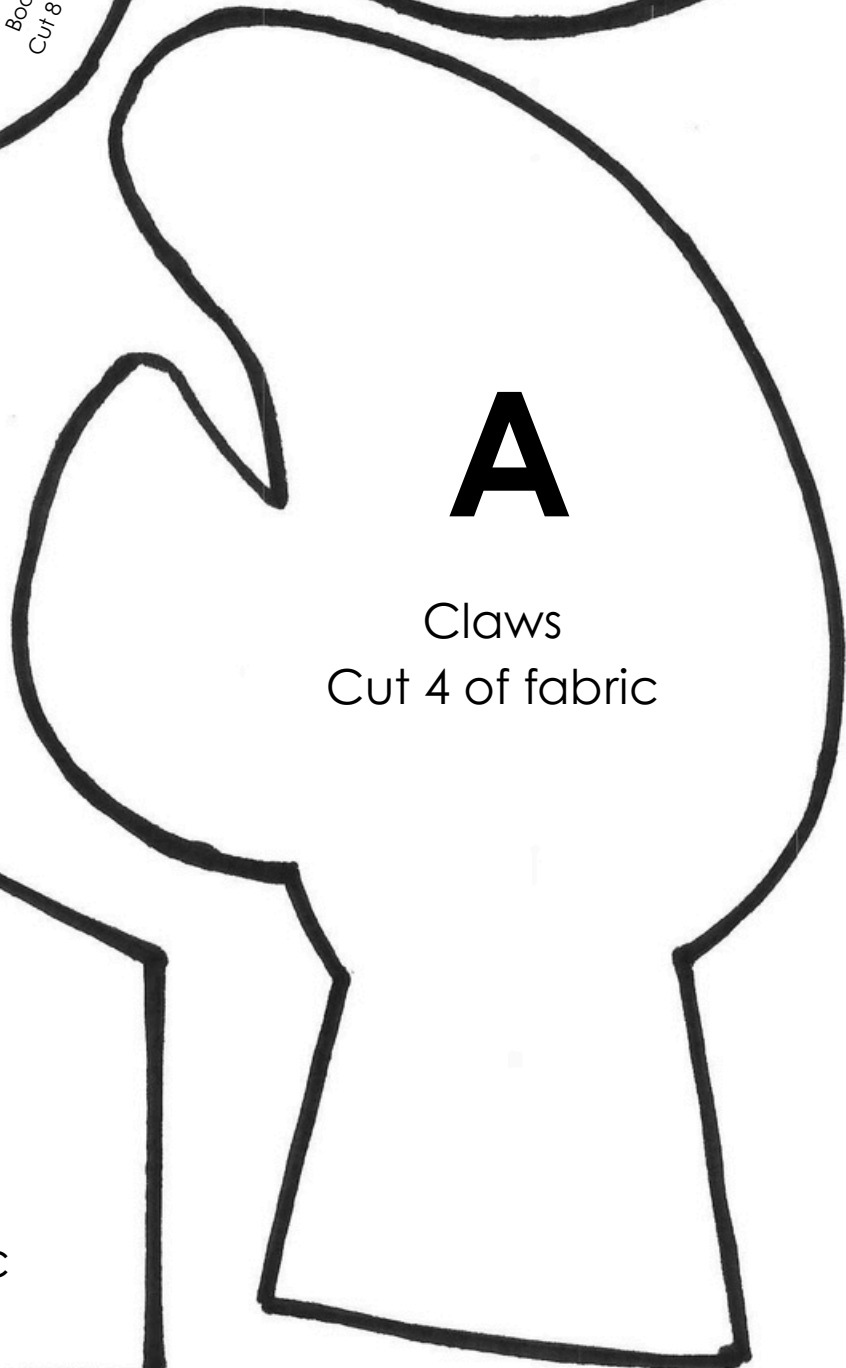
I
Body Spikes
Cut 8 of fabric



H
Front Spikes
Cut 2 of fabric



F
Front of Foot
Cut 6 of fabric



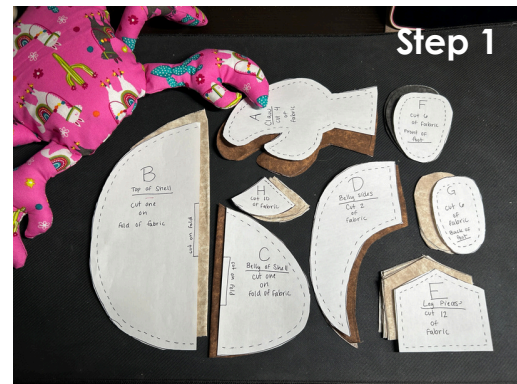
A
Claws
Cut 4 of fabric



E
Leg Pieces
Cut 12 of fabric

Step 1

Cut out all pattern pieces according to the instructions with the desired fabric colors.



Step 2

With right sides together, place 2 of each of the claw (A) pieces together and line up the edges. You can either pin or clip the claw (A) pieces together in preparation to sew them together. Sew the claw pieces (A) together, leaving an opening at the bottom of the claw and backstitching at each end.



Step 3

Once the claw pieces (A) are sewn together, carefully snip into the seam allowance on all the rounded edges.

Be mindful of the seam itself and do not cut through the thread, just up to it. This will help prevent wrinkling when you turn the claws right side out.



Step 4

Using either the back of a pencil, pen, or some other turning device (I used a crochet hook) turn the claw right side out.

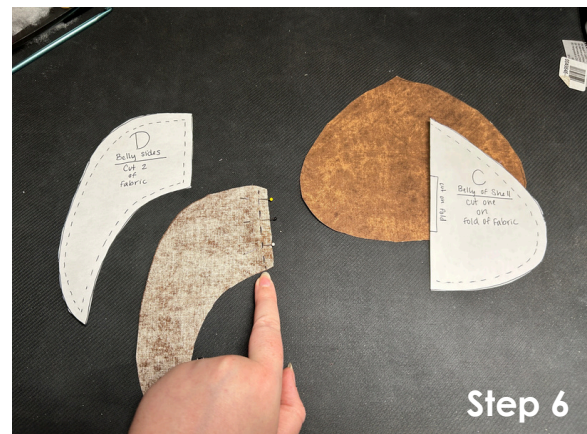


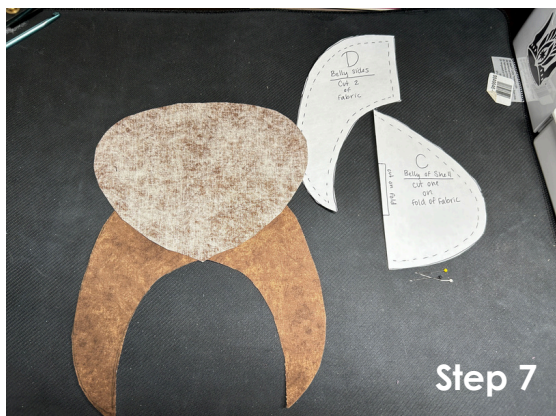
Step 5

Once the claw pieces are turned right side out, fill them with doll stuffing to your desired firmness. I like to secure the open ends shut with small clips or a pin at this point to avoid any stuffing coming out of the claw pieces while working on the rest of the crab (See image). Set these aside.

Step 6

Next we will work with the Belly Side (D) and sew the two pieces, right sides together at the top short end - backstitching at each end. Either finger press or iron the seam flat once the Belly Sides (D) are sewn together.





Step 7

This next portion will take some patience. We will be using the Belly Side pieces (D) and attach them to the Center Belly (C) piece. Starting at the center of both pieces, with right sides together, pin Belly Piece (C) to Belly Side Piece (D). Additional images are provided below.



When pinning, try to avoid catching any wrinkles in the seam. This will avoid any stitches catching fabric while sewing and causing wrinkles in the finished project.



Step 8

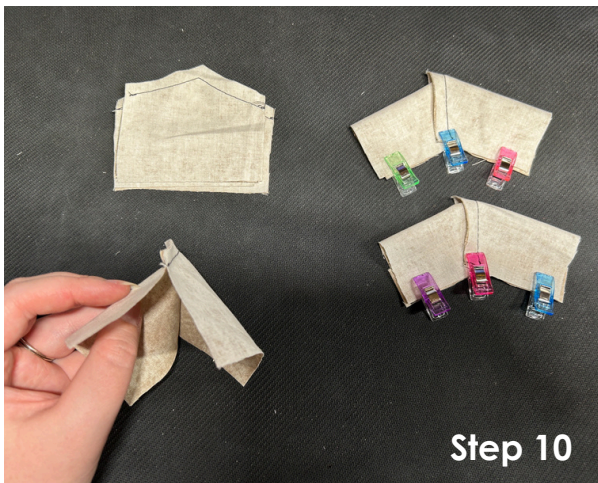
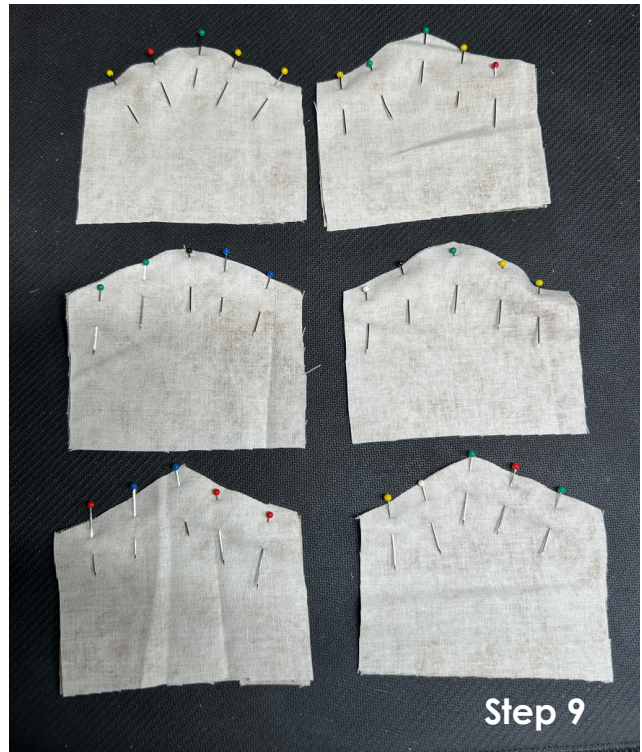
Once you have pinned the edges, sew around the shape where (D) and (C) are pinned together. Take this slowly, flattening the seam as you sew around the curve, backstitching at each end. Snip into the seam allowance on the curve and iron or press flat the seam for a clean finish. Set this aside.



Step 9

Take the leg pieces (E) and place two right sides together and pin at the top where there it comes to a point. Repeat this with all 12 pieces to start creating the 6 legs for the crab.

Sew along the top pinned edges. If you are sewing on a machine, leave the needle in the down position in the fabric when you reach the peak. Lift the presser foot and turn the fabric slightly to sew down the other slanted edge. Backstitch at each end.



Step 10

Take each of the (E) pieces you have sewn together and with right sides together, fold them down at the center seam. Clip or pin them together and repeat this for each leg piece (E).

Step 11

For each leg piece (E), sew from one edge to the other across where the edges meet, backstitching at the start and finish.





Step 12

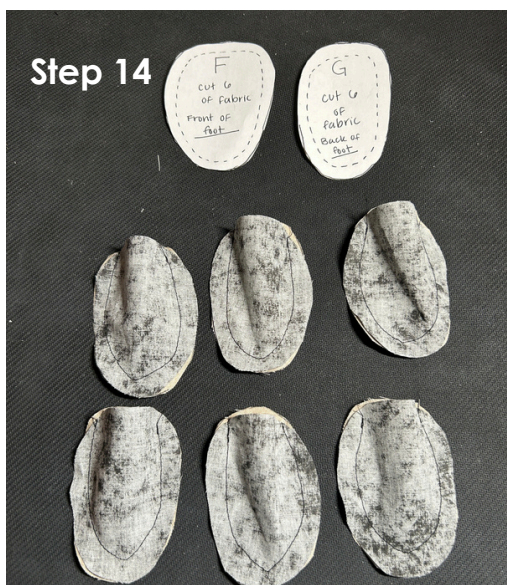
Turn the legs right side out using a turning tool and stuff to your desired firmness with doll stuffing.

Leave about $\frac{3}{4}$ of an inch or 2 cm without stuffing on either end as seen in the photo, this will allow you to properly attach the leg to the foot and then to the main body of the crab later in the process. Set these aside.

Step 13

Next, we will need the front and back foot pieces (F and G). Lining up the edges, pin or secure piece F to piece G with right sides together.

Once pinned together, there will be a portion of the front piece (F) that sits higher in the middle of the foot. This allows for space to stuff the foot, as seen in the photo to the right.



Step 14

Once you have pinned each of the feet right sides together, sew around the edge, backstitching where you start and stop. **Be sure to leave an opening at the top of the foot.** This will allow you to add the doll stuffing and make it simpler to attach the foot (F & G) to the leg pieces (E) later in the process.

Step 15

Turn all of the sewn foot pieces (F & G) inside out with your turning tool. Add doll stuffing to the feet, leaving $\frac{3}{4}$ of an inch or 2 cm without stuffing at the top of the foot where the opening is.



Step 16

Grab your needle and thread. Thread the needle and fold over the thread to tie a knot at the bottom, you should now have a thread that is double the thickness.

Take both the leg piece (E) and foot (F & G) and fold the edge over to the inside of the piece. They should look like this photo with no raw edges showing.

Step 17

Take the leg (E) and foot piece (F & G) and push the folded edge of the leg into the folded edge of the foot. It should fit inside of the foot piece itself.

Starting in the back of the foot, use the needle and thread to sew the foot to the leg. Go around once to create the initial stitch, and then again to cross over the previous stitch and create an 'x' on the foot to secure it together. When you reach the back again, tie a knot to secure the thread and finish the foot. **Repeat with the 5 other legs.**





Step 18

Grab all of the leg pieces (E), the top of the shell (B), and the claws (A) for this next step.

We are going to baste the legs and claws to the shell pattern piece to make it easier to sew all of the pieces together.

From the top center of the shell piece (B) measure 2 inches or 5 cm from the center and pin the claw there on either side. Make sure that the claws are facing the correct direction when flipped over. The raw edges should be facing the same direction as the shell edge, on the right side of the shell (B) fabric).

When spacing out the legs, measure 1 inch or 2.5 cm from the edge of the claw piece (A) and place the first leg. Continue to measure this way until you have pinned all the legs onto the top shell piece (B).

Repeat this process for the other side.



Step 19

Carefully, baste the legs and claws to the top shell piece of fabric. (Basting is simply a method to secure a piece ahead of time, to make the final attachment easier.)

Once you baste these on, the piece should look like this.

Step 20

Now that the shell, legs, and claws are attached together, grab the belly piece (C & D).

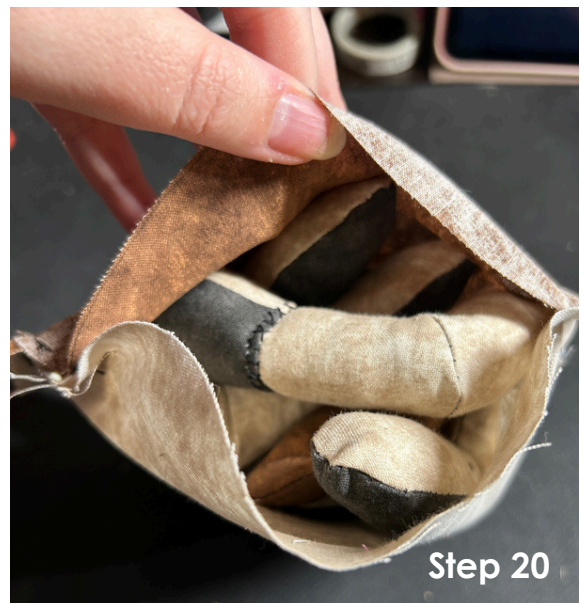
Starting at the top, pin the curved edges right sides together securely and evenly to prepare to attach the belly to the top shell of the crab. Make sure that all of the legs and claws are on the inside of the crab.

This part can be difficult the first time you try it, so take your time and pin carefully.



Leave an opening between the back legs of the crab that is about 5.5 inches or 14 cm long.

Once you have finished pinning, the hold should be strong enough to push all the legs and claws in if you hadn't already. See the image below to see what this will look like when you look into the opening on the crab body.



Step 21

Very carefully, sew around the edge of where you pinned the crab together in Step 20. This will take some patience on a machine, but it can help to press down on the stuffing to get a more flat surface to sew on.

Once this is done, turn your crab right side out!



TIP:

If Step 21 is too difficult, it is likely that there was not enough space left in the legs from the stuffing, if this is the case, it is best to go back, unpick the stitches that were basted on, and remove some of the stuffing from the legs. Then follow Steps 18 - 21 again to reattach the legs.



Step 22

Now that you have the body complete, use the doll stuffing to stuff the crab to your desired firmness. Using pins/clips fold the edges on the open area of the crab over and attach them to each other.

Step 23

Using your needle and thread again, sew the opening closed on the back of the crab. You can use any kind of stitch you would like, I used a blanket stitch here, but a Ladder Stitch or Henson Stitch would work here as well.



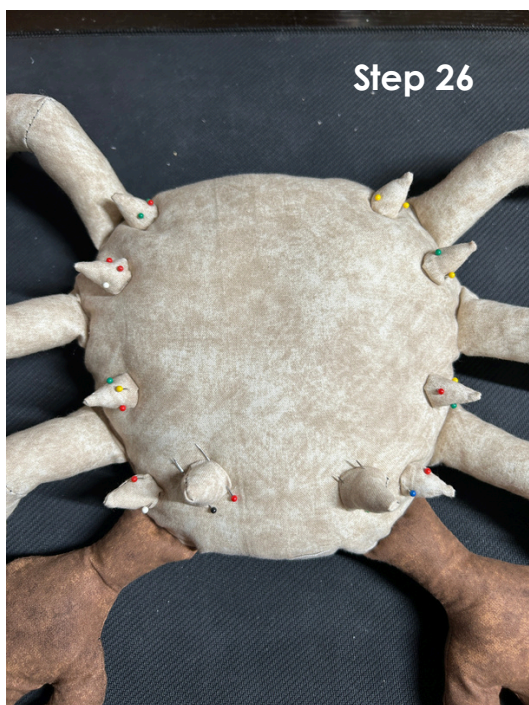


Step 24

Now we need to add the spikes!
Take pieces (H) and (I) and fold them right sides together and sew them down the open side, backstitching at each end and leaving the base open.

Step 25

Next, we will turn the spikes right side out and stuff them doll stuffing leaving about 1/8 of an inch or 3mm empty at the bottom of the spike. The empty space will be where we fold under the raw edges to secure them to the top of the crab.



Step 26

Pin the spikes equidistant from each other on the back of the crab. I measured about one inch or 2.5 cm between the side spikes (I).

The main spikes (H) that are taller are 2 inches or 5 cm apart. 1 inch or 2.5 cm from the center front of the crab.

Step 27

Once the spikes are pinned to the crab, take your needle and thread and secure the spike to the back of the crab. Once you have gone around the first time, go back around stitching over the thread to create an 'x'.

Repeat this for each spike and tie a knot in the back of the spike to secure it.



Step 27



Step 27



Step 28

Step 28

The only step left is the eyes! These can be buttons, or safety eyes, or made of fabric, that is up to you! I added buttons to the front and tied it off in the back.

If this is something that is intended for a child, you can also embroider eyes onto the fabric itself to avoid any plastic pieces.



Step 28

Congratulations, you have a Mud Crab!

This pattern is intended for personal and non-commercial use unless otherwise stated. Please. use caution when handling sewing needles, scissors, and other sharp tools.